



INSTALLATION INSTRUCTIONS

Ground Preparation

Minimal ground preparation is advised prior to installation of HexaDeck®. It is recommended that large rocks/stones be removed prior to laying HexaDeck tiles. Additionally, it is advised that installation be performed on dry ground (if possible), as this will speed installation.

For installation on wet or soft ground, see section “Installing on Grass, Mud, or Sensitive Athletic Fields.”

Material Staging

To speed installation it is recommended the material be staged by pallet jacks, a forklift or other means in strategic locations according to installation route. Much of the time spent installing HexaDeck involves bringing sections into position for connection. It is possible to use a forklift or other vehicle to ride over installed portions of the floor/roadway, following the route of installation and delivering product for rapid connection.

Installing a HexaDeck Floor

Place the first tile at the top left corner as shown (see figure 1). The connection hook should be placed away from the direction you are laying your floor/roadway.

The first row of tiles should be placed in position as shown (see figure 1) (Note: this is very important as placement of tiles in a different sequence will make it difficult to connect sections as connection hooks on installed sections will be facing down, rather than up). **Tip** It is important that the first row be laid as straight as possible and at an exact 90° angle to the direction the floor will be laid (see figure 2) to prevent “drifting” of the floor over distances.

Tip Additional rows may be laid as shown, allowing multiple workers to work on the same row, speeding installation. This method will prevent teams of workers from interfering with one another.

HexaDeck can be configured to create numerous shaped floors and tiles may be stepped to form turns and other desired effects.

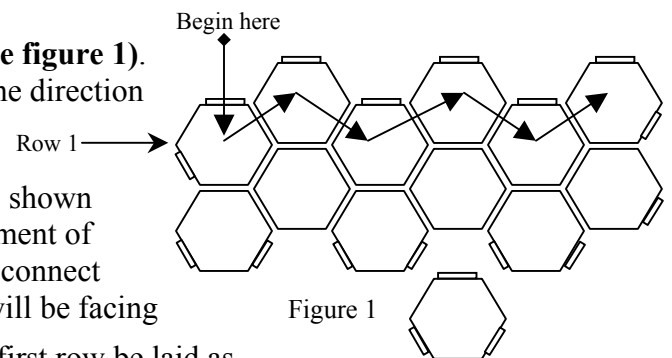


Figure 1

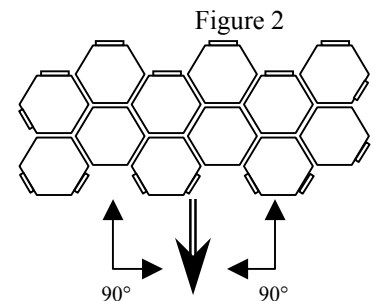
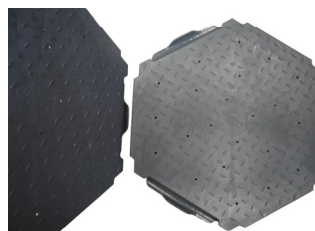


Figure 2



Installing on Grass, Mud, or Sensitive Athletic Fields

Tip It is recommended that grass surfaces be cut short just prior to installing HexaDeck. Grass may be watered before installation but it is recommended that the grass be allowed to dry before deploying HexaDeck. Standard fungicides may be used in advance of HexaDeck installation to provide additional protection for sensitive athletic turf or lawns.

Tip It is recommended that a lightweight Geo textile material or fabric tarp be laid prior to heavy-duty use over sensitive grass or athletic fields. This will help prevent loss or damage under heavy loading, especially during wet or muddy conditions. Note, for pedestrian use or light equipment access Geotech material is not required. For muddy conditions, a tarp or equivalent material may be used to prevent mud from filling tiles, making removal quicker and easier.

Upon removal of HexaDeck, simply rake grass to facilitate rapid rebound.

HexaDeck may be installed for 4-7 days depending on the weather, climate and specific grass involved. For more specific details and suggestions please call our office for a free consultation.

Tip Suggestions and Installation Tips

Tip It is advised that a crowbar be available during installation. This could become useful on uneven or sloped ground where it may be necessary to provide or remove slack between tiles during installation. Should it appear that sections are not lining up and connecting, it is possible to “bring” slack to the location it is needed (**see figure 3**). It may be necessary to start bringing slack from several rows back.

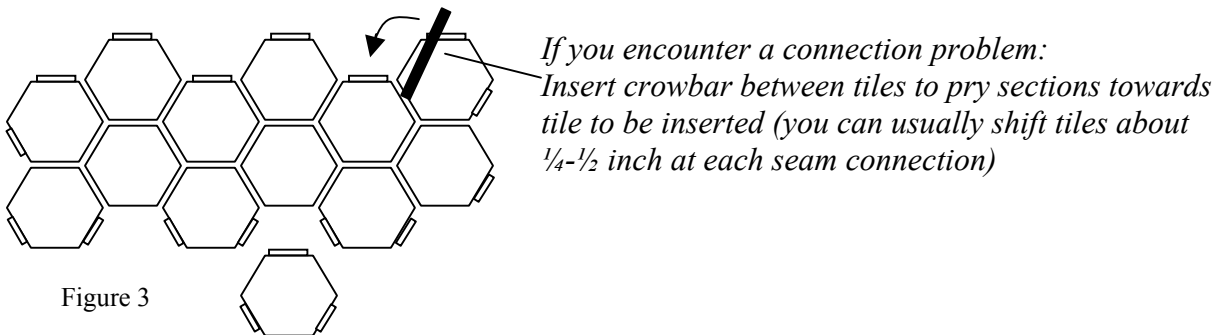


Figure 3

Tip Light vehicles require a minimum of eight (8) tiles across. Trucks require a minimum of nine (9) tiles across. Larger areas can be created for turning or passing as required.

Tip Corner and perimeter tiles may be staked as required. We offer drilled tiles for perimeters and tiles may be drilled on site and staked using standard nail stakes and washers.

Storage and Maintenance

HexaDeck should be stored on oversized pallets and connected in layers of 6 tiles. Maximum pallet height for standard trucks and high cube ocean containers is 49 layers, though we recommend storing HexaDeck on pallets with 252 pieces (42 layers of 6 tiles).

To clean HexaDeck we recommend using standard cleaning fluids and a pressure washer. Be sure to clean HexaDeck sheets both on top and on the underside to ensure that all dirt and debris are removed. **Tip** For large events, it is recommended that a leaf blower be used to remove loose paper and other debris from the top of the floor before breakdown.

While HexaDeck may be stored outside, it is recommended that a tarp be used to protect HexaDeck and to keep it clean when not in use.

HexaDeck for:

- Roadways
- Tents
- Tactical Operations Centers
- Field hospitals
- Maintenance areas
- Construction sites
- Athletic fields
- Utilities
- Beach access
- Emergency services
- Fairs & special events

We thank you for choosing HexaDeck for your flooring and access requirements.



Signature (Fencing & Flooring) Systems, LLC
50 East 42nd Street • Suite 501
New York, NY 10017

Toll Free: 800-569-2751 • 212-953-1116 • Fax: 212-953-1117
Flooring: www.eventdeck.com • Fencing: www.signaturefencing.com